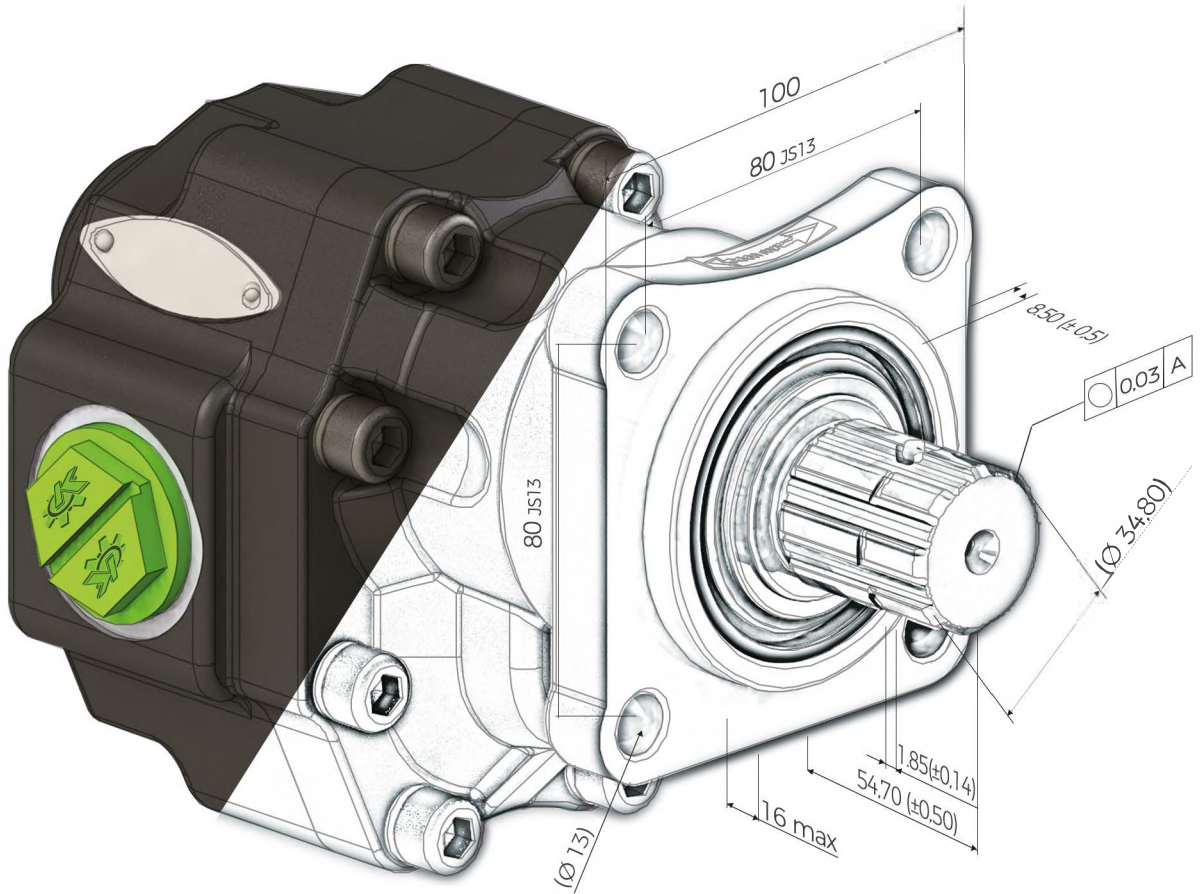


**Teknik Katalog**  
Technical Catalogue



[www.kozmaksan.net](http://www.kozmaksan.net)

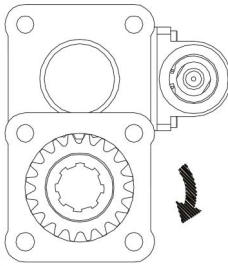




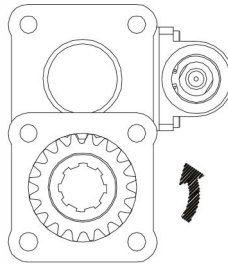
## 25 Grubu Çift Dönüslü Dişli Pompa 25 Group Bi-Rotational Gear Pumps



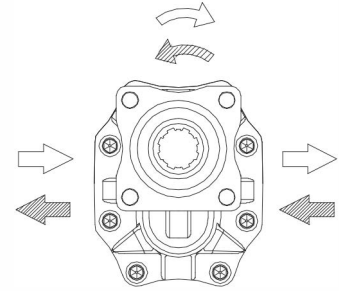
### Teknik Çizim | Technical Drawing



PTO Mili saat yönünde (SAĞ)  
The PTO shaft is CW rotating



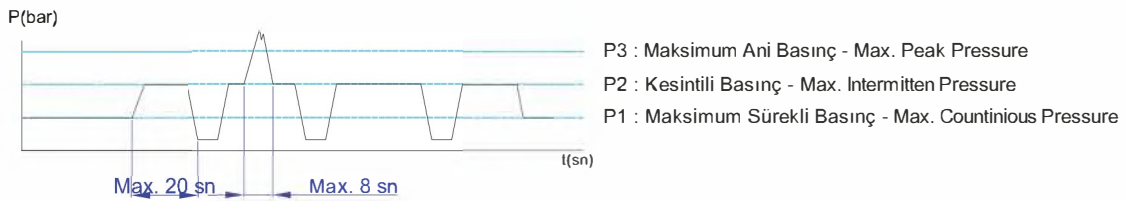
PTO Mili saatin tersi yönünde (SOL)  
The PTO shaft is CCW rotating



çift yönlü dönüş  
Reversible Rotational

Giriş-Çıkış Rakor yerlerini  
değiştirerek yönünü değiştirebilirsiniz  
You Can Change The Directional Of The Pump  
By Changing The Inlet And Outlet Fitting

### Basınç Tanımı | Pressure Definiton

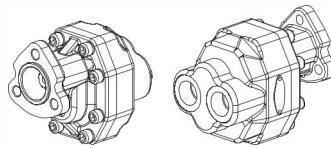
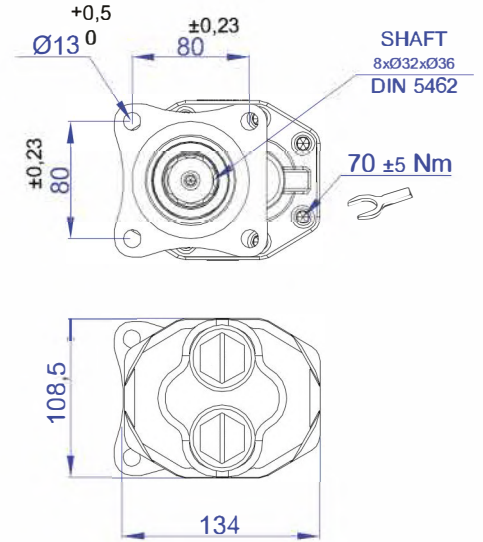
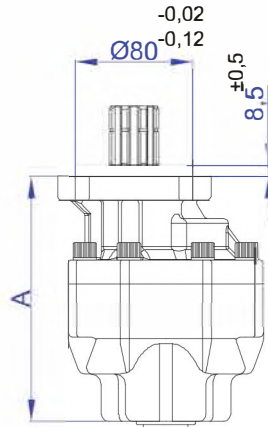
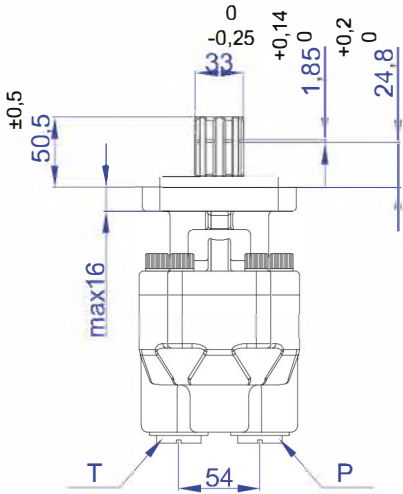
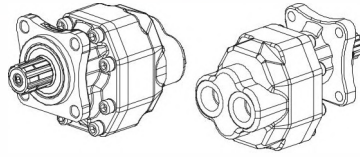


Pompa Tipi Pump Type	Debi Displacement	Max. Sürekli Hız Max. Speed at Continuous Press.	Maksimum Kesik Hız Max. Speed at Intermittent Press.(nmax)	Min Kesik Hız Min. Speed at Intermittent Press.	Max Sürekli Basınç Max. Continuous Pressure (P <sub>nom</sub> )	Max. Kesik Basınç Max. Intermittent Pressure (P <sub>max</sub> )	Max. Pik Basınç Max. Peak Pressure (P <sub>max</sub> )
	lt/min	n (min <sup>-1</sup> ) (≤ P1)	n (min <sup>-1</sup> ) (P ≤ 30 bar)	n (min <sup>-1</sup> )	bar	bar	bar
15 lt	15	1900	2500	400	240	270	290
25 lt	25	1900	2500	400	210	240	250
35 lt	35	1700	2300	300	180	200	210
45 lt	45	1700	2300	300	170	190	200

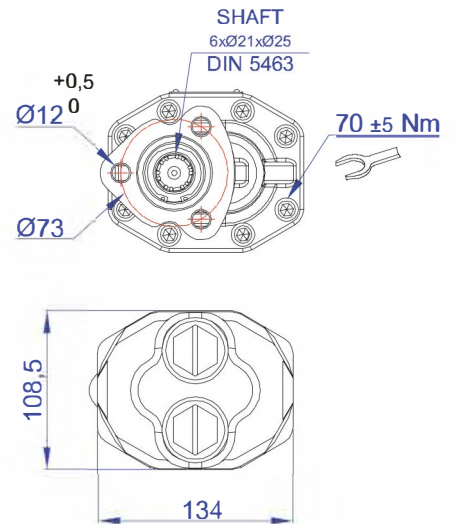
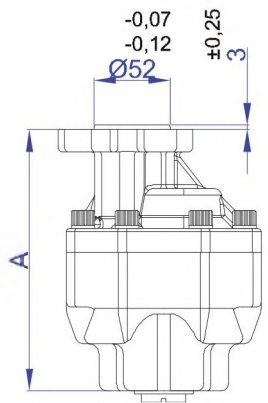
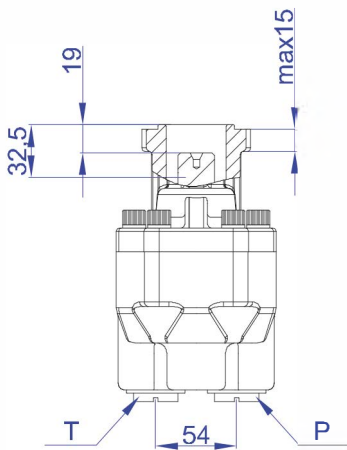
# 25 Grubu Çift Dönümlü Dişli Pompa 25 Group Bi-Rotational Gear Pumps



ISO



UNI



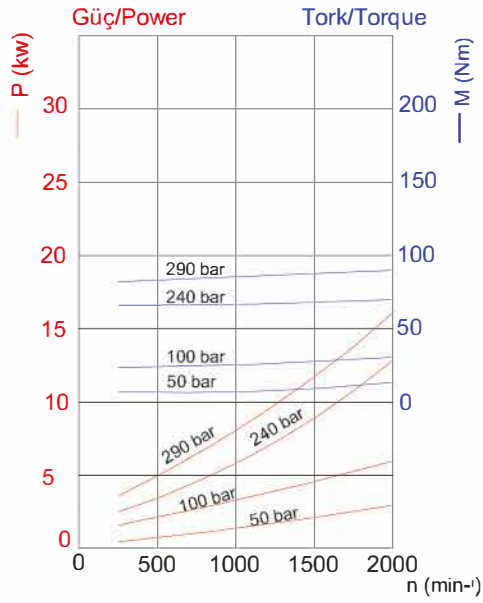
Ba_ bS F[b] Bg_ b FkbW	Ba_ bS =aVg Bg_ b 5aVW	BSY`S` f i f[b] Mag` f` Y Type	3/_ _ fi	F/_ _ fi	B/_ _ fi	I WYZf
# ;f	KH01010150112B1 KH0101015" \$12B1	G@;	#%+	9 # \$'	9 # \$'	)f'
\$' f	KH01010250112B1 KH01010250212B1	;EA G@;	#&* #( "	9 % &'	9 % &'	*f% )f)
% f	KH01010350112B1 KH01010350212B1	;EA G@;	#) #( +	9 % &'	9 % &'	*f+ *f%
&' f	KH01010450112B1 KH01010450212B1	;EA G@;	#( #)*	9 #	9 #	+f& *f*



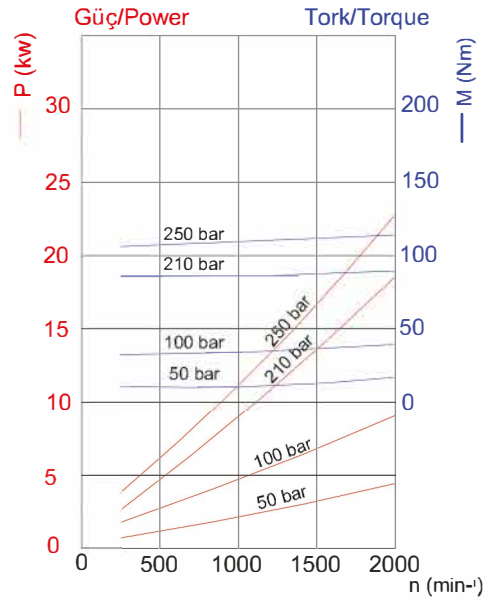
# 25 Grubu Çift Dönürlü Dişli Pompa

## 25 Group Bi-Rotational Gear Pumps

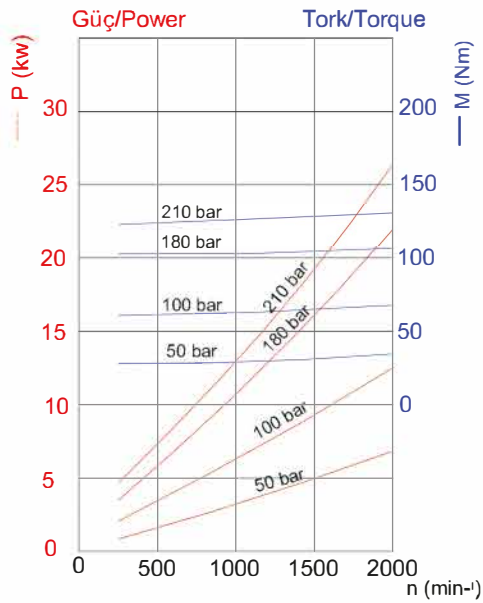
15 LT



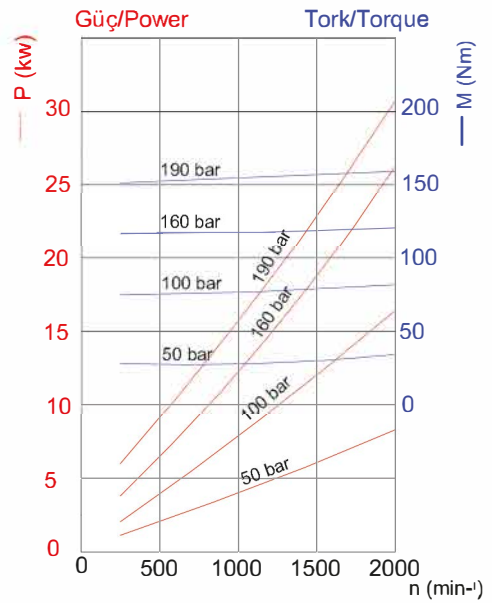
25 LT



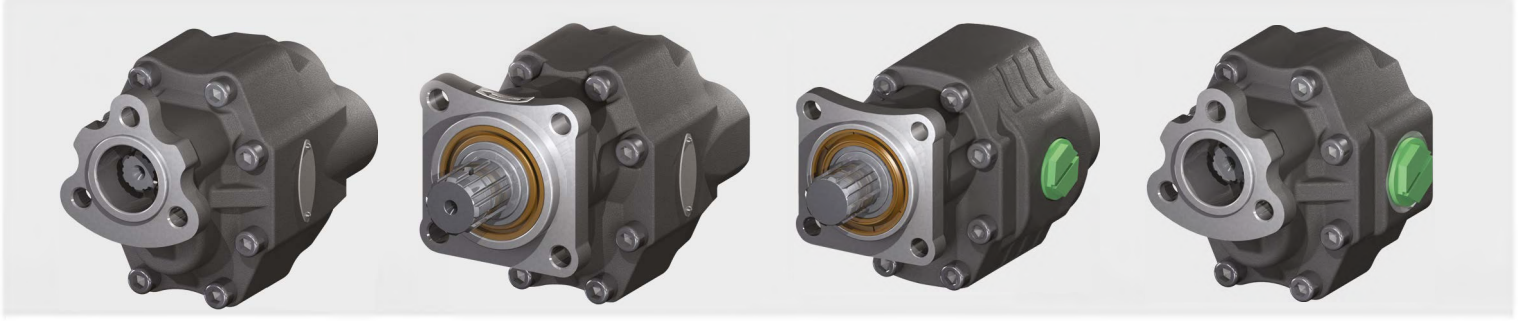
35 LT



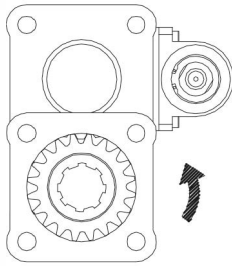
45 LT



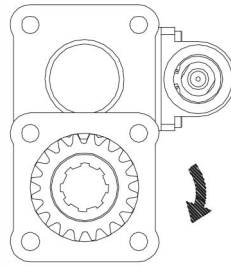




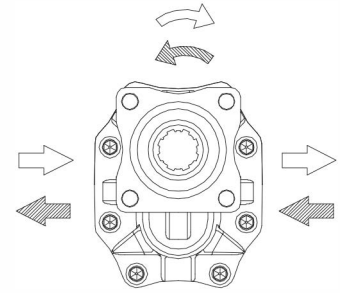
## Teknik Çizim | Technical Drawing



PTO Mili saat yönünde (SAĞ)  
The PTO shaft is CW rotating



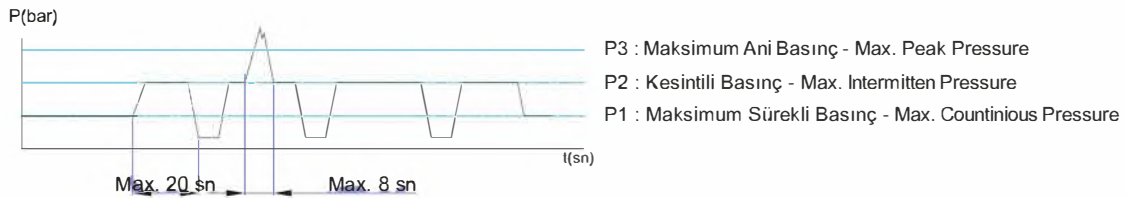
PTO Mili saatin tersi yönünde (SOL)  
The PTO shaft is CCW rotating



çift yönlü dönüş  
Reversible Rotational

Giriş-Çıkış Rakor yerlerini  
değiştirerek yönünü değiştirebilirsiniz  
You Can Change The Directional Of The Pump  
By Changing The Inlet And Outlet Fitting

## Basınç Tanımı | Pressure Definiton

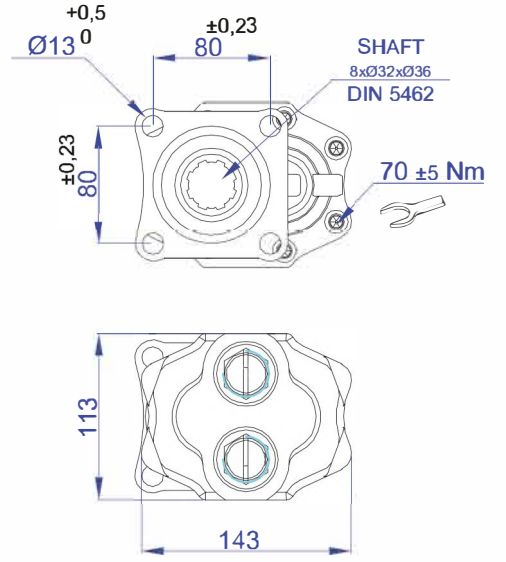
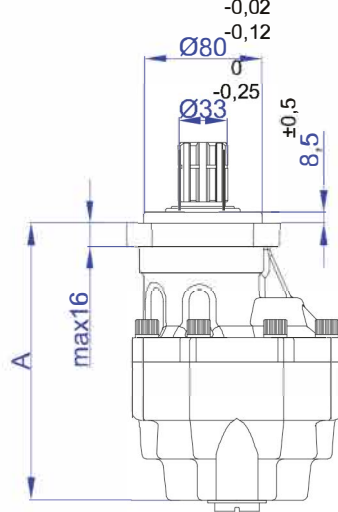
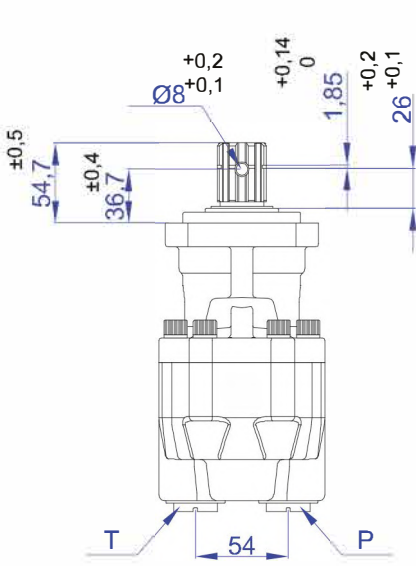
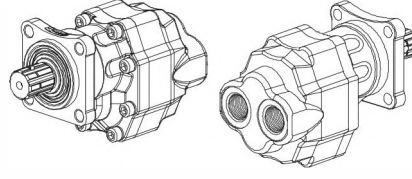


Pompa Tipi Pump Type	Debi Displacement	Max. Sürekli Hız Max. Speed at Continuous Press.	Maksimum Kesik Hız Max. Speed at Intermittent Press.(nmax)	Min Kesik Hız Min. Speed at Intermittent Press.	Max Sürekli Basınç Max. Continuous Pressure (P <sub>nom</sub> )	Max. Kesik Basınç Max. Intermittent Pressure (P <sub>max</sub> )	Max. Pik Basınç Max. Peak Pressure (P <sub>max</sub> )
	lt/min	n (min <sup>-1</sup> ) (≤ P1)	n (min <sup>-1</sup> ) (P ≤ 30 bar)	n (min <sup>-1</sup> )	bar	bar	bar
55 lt	55	1700	2000	300	220	240	250
61 lt	61	1700	2000	300	210	230	240
65 lt	65	1700	2000	300	210	230	240
82 lt	82	1500	1800	300	180	210	220

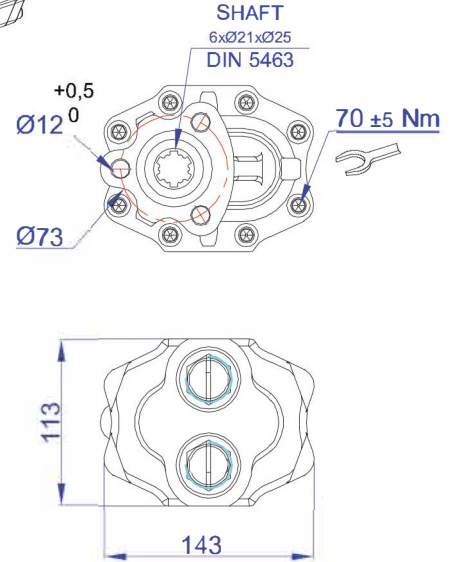
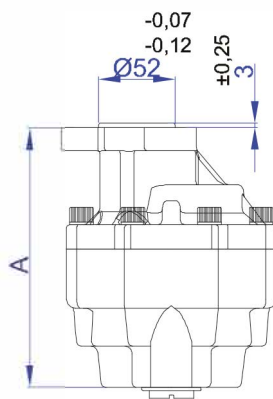
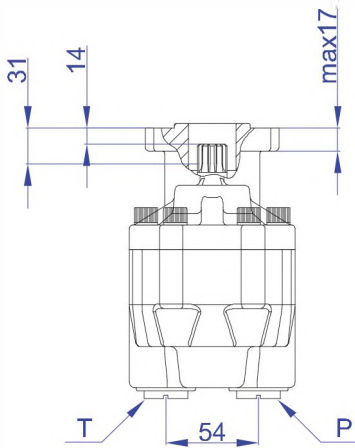
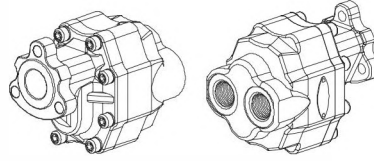


## 30 Grubu Çift Dönürlü Dişli Pompa 30 Group Bi-Rotational Gear Pumps

ISO



UNI

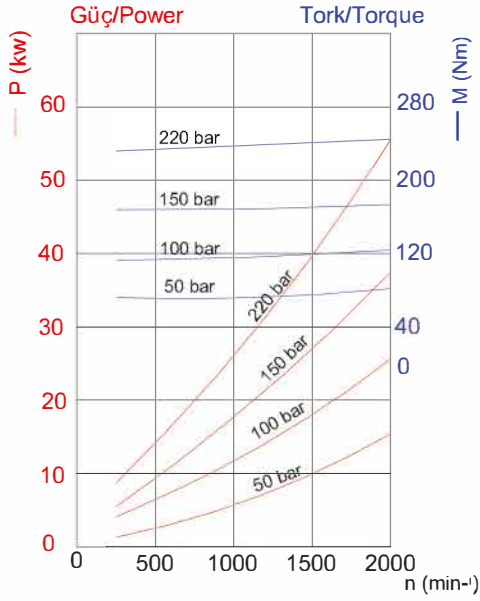


Pompa Tipi Pump Type	Pompa Kodu Pump Code	Baglantı Tipi Mounting Type	A (mm)	T (mm)	P (mm)	Ağırlık (kg) Weight
55 lt	KH01020550112B1	ISO	182,5	G 1"	G 1"	11
	KH01020550212B1	UNI	169,5			9,3
65 lt	KH01020650112B1	ISO	189,5	G 1"	G 1"	11,5
	KH01020650212B1	UNI	176,5			9,7
82 lt	KH01020820112B1	ISO	201,5	G 1"	G 1"	12,2
	KH01020820212B1	UNI	188,5			10,3

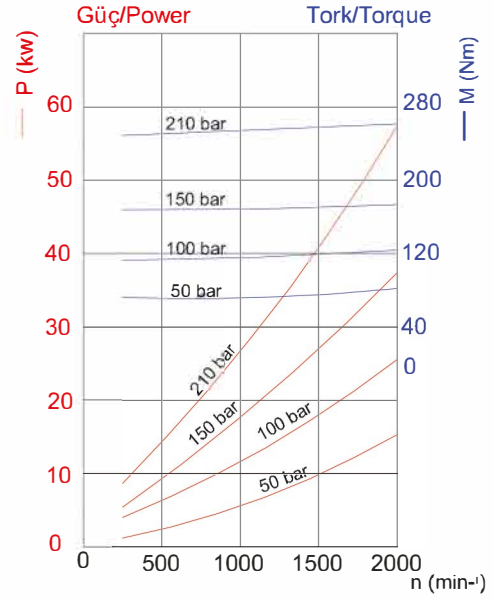


# 30 Grubu Dişli Pompa 30 Group Gear Pumps

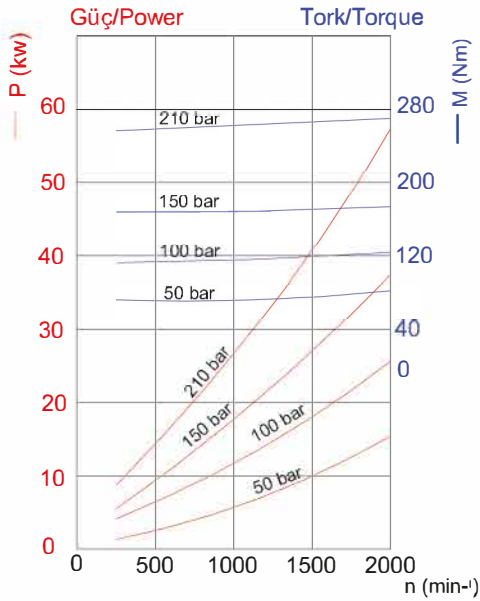
55 LT



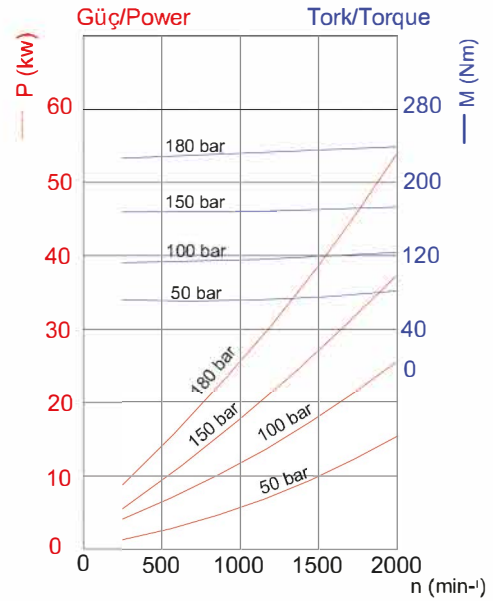
61 LT



65 LT

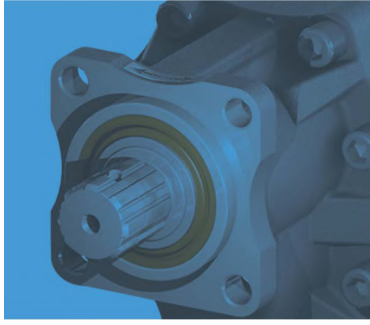


82 LT

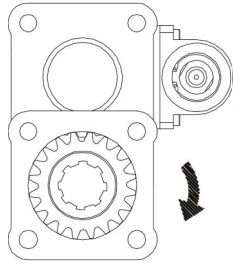




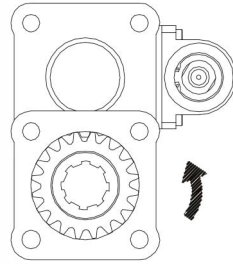
# 35 Grubu Çift Dönüslü Dişli Pompa 35 Group Bi-Rotational Gear Pumps



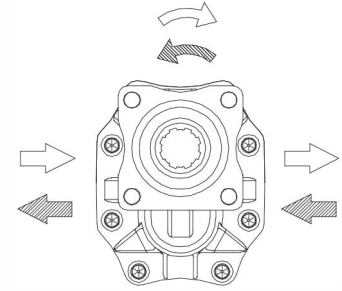
## Teknik Çizim | Technical Drawing



PTO Mili saat yönünde (SAĞ)  
The PTO shaft is CW rotating



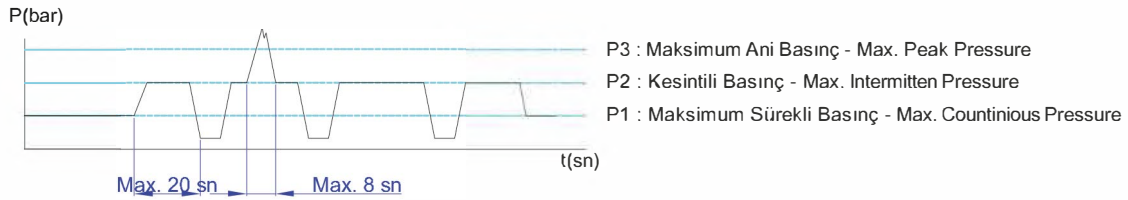
PTO Mili saatin tersi yönünde (SOL)  
The PTO shaft is CCW rotating



çift yönlü dönüş  
Reversible Rotational

Giriş-Çıkış Rakor yerlerini  
değiştirerek yönünü değiştirebilirsiniz  
You Can Change The Directional Of The Pump  
By Changing The Inlet And Outlet Fitting

## Basınç Tanımı | Pressure Definiton



Pompa Tipi Pump Type	Debi Displacement	Max. Sürekli Hız Max. Speed at Continuous Press.	Maksimum Kesik Hız Max. Speed at Intermittent Press.(nmax)	Min Kesik Hız Min. Speed at Intermittent Press.	Max Sürekli Basınç Max. Continuous Pressure (Pnom)	Max. Kesik Basınç Max. Intermittent Pressure (Pmax)	Max. Pik Basınç Max. Peak Pressure (Pmax)
	lt/min	n (min <sup>-1</sup> ) (≤ P1)	n (min <sup>-1</sup> ) (P ≤ 30 bar)	n (min <sup>-1</sup> )	bar	bar	bar
75 lt	75	1500	2000	300	210	230	260
90 lt	90	1500	2000	300	210	230	250
105 lt	105	1400	1900	300	200	220	240
125 lt	125	1400	1900	300	200	210	230

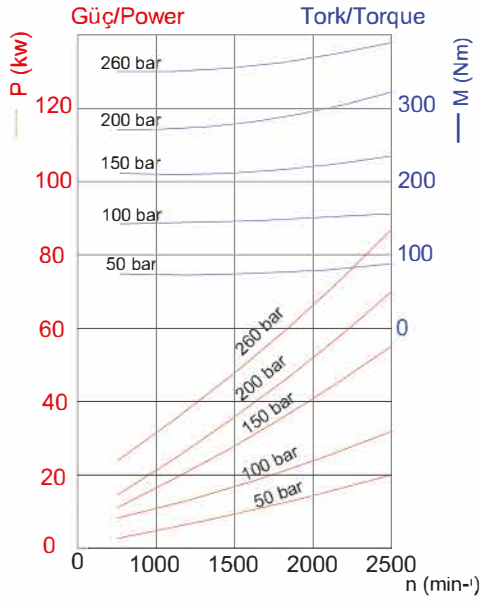




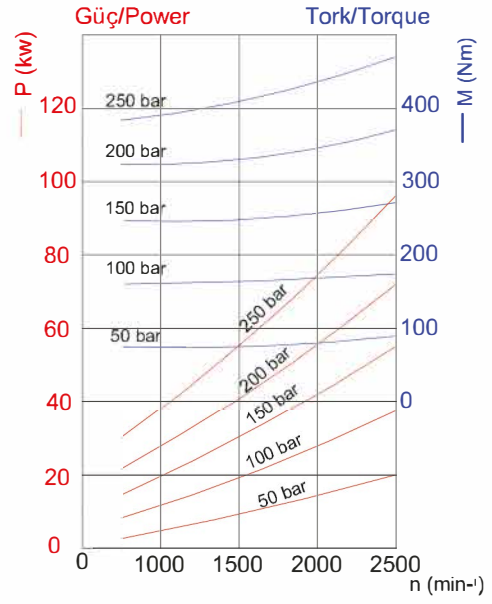


# 35 Grubu Çift Dönürlü Dişli Pompa 35 Group Bi-Rotational Gear Pumps

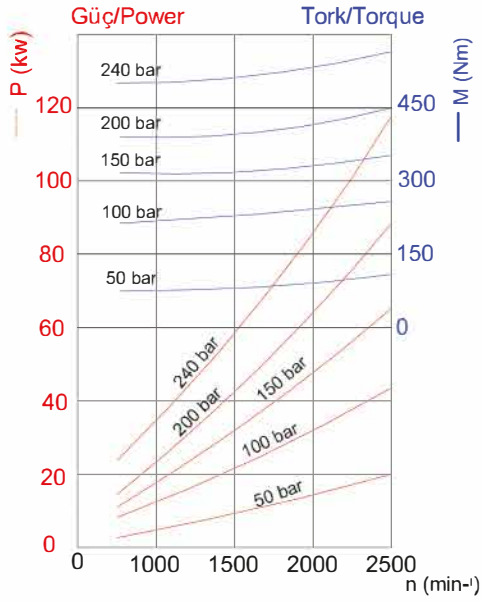
075 LT



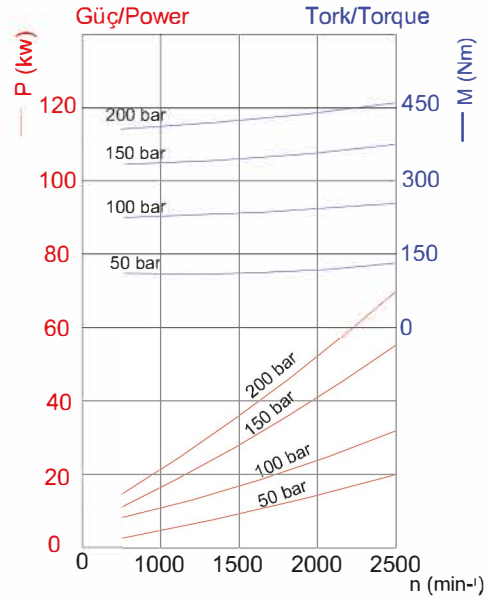
090 LT



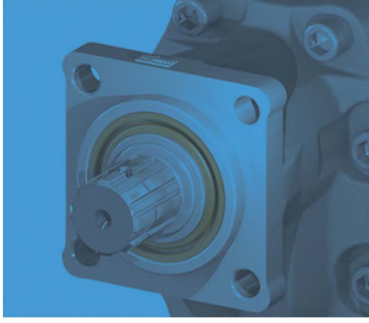
105 LT



125 LT



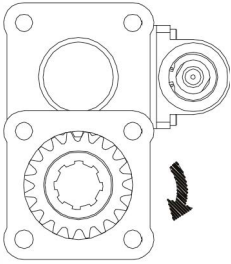
# 40 Grubu Tek Dönümlü Dişli Pompa 40 Group Single-Rotational Gear Pumps



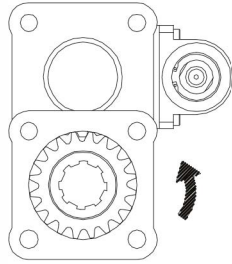
## Pompa Tipi Okuma Diyagramı | Type Reading Diagram

<b>PDTD</b>	-	<b>40</b>	-	<b>087</b>	-	<b>01</b>	-	<b>3</b>	-	<b>1</b>
Tek Dönümlü Dişli Pompa Single Rotational Gear Pumps		40 Serisi Dişli Pompa 40 Series Gear Pumps		Pompa Debisi Displacement		Mil Tipi Shaft Type DIN 5462 ISO		Bağlantı Tipi Mounting holes		Dönüş Yönü Rotation

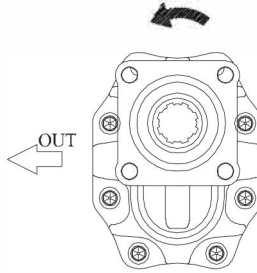
## Teknik Çizim | Technical Drawing



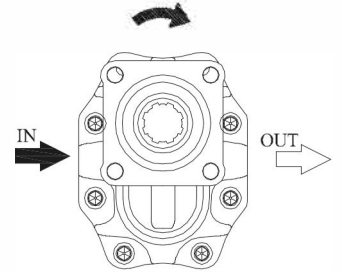
PTO Mili saat yönünde (SAĞ)  
The PTO shaft is CW rotating



PTO Mili saatin tersi yönünde (SOL)  
The PTO shaft is CCW rotating

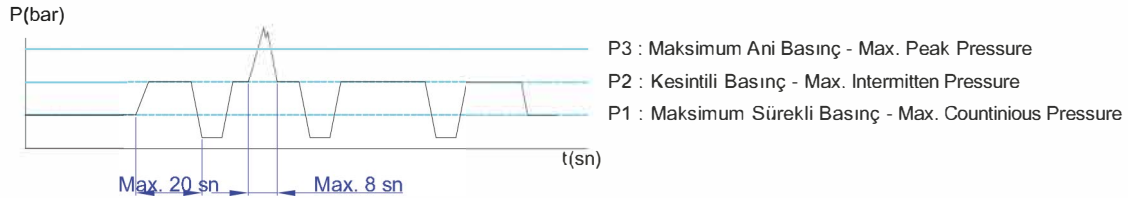


saat yönünün tersi dönüş  
CCW Rotational



saat yönündeki dönüş  
CW Rotational

## Basınç Tanımı | Pressure Definiton



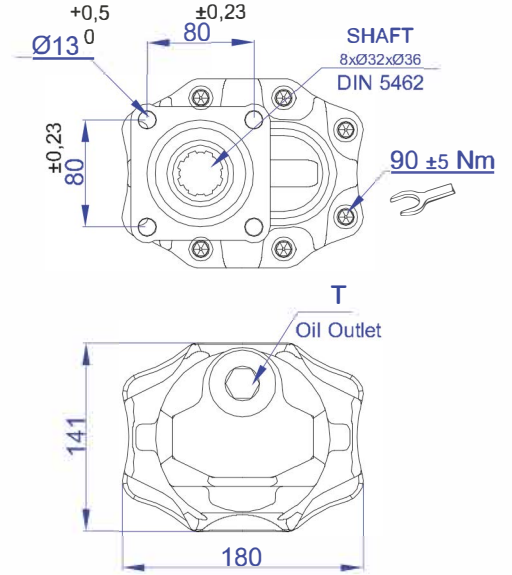
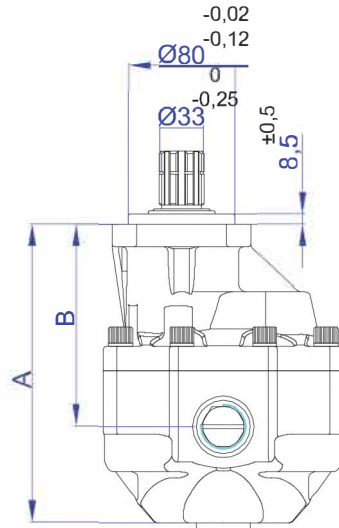
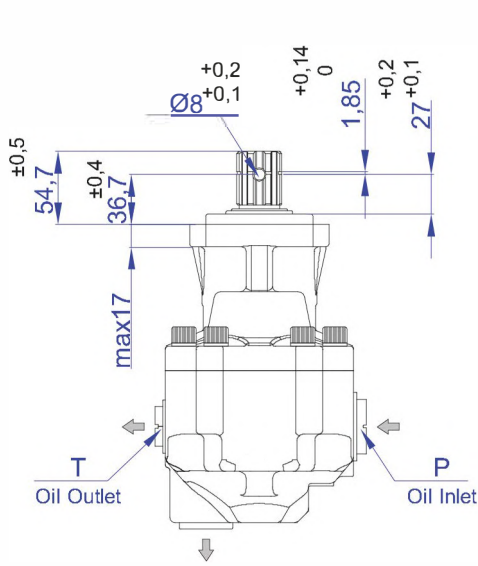
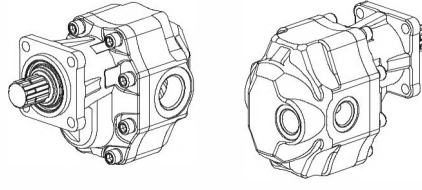
Pompa Tipi Pump Type	Debi Displacement	Max. Sürekli Hız Max. Speed at Continuous Press.	Maksimum Kesik Hız Max. Speed at Intermittent Press.(nmax)	Min Kesik Hız Min. Speed at Intermittent Press.	Max Sürekli Basınç Max. Continuous Pressure (Pnom)	Max. Kesik Basınç Max. Intermittent Pressure (Pmax)	Max. Pik Basınç Max. Peak Pressure (Pmax)
	lt/min	n (min <sup>-1</sup> ) (≤ P1)	n (min <sup>-1</sup> ) (P ≤ 30 bar)	n (min <sup>-1</sup> )	bar	bar	bar
87 lt	87	1700	2000	300	220	240	250
109 lt	109	1700	2000	300	210	230	240
133 lt	133	1700	2000	300	200	220	230
151 lt	151	1600	1900	300	170	195	210



# 40 Grubu Tek Dönürlü Dişli Pompa 40 Group Single-Rotational Gear Pumps

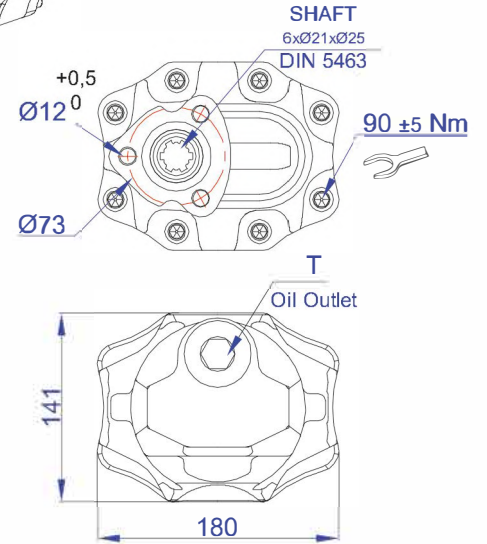
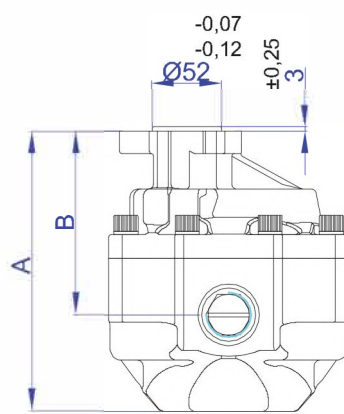
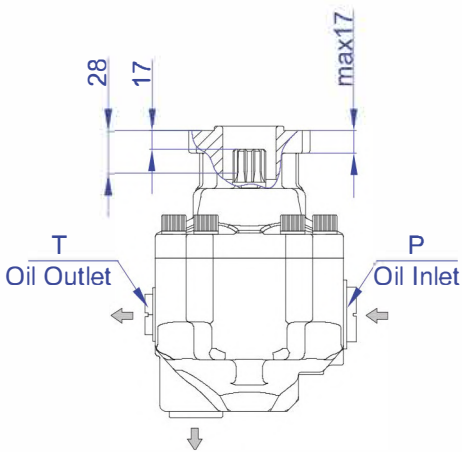
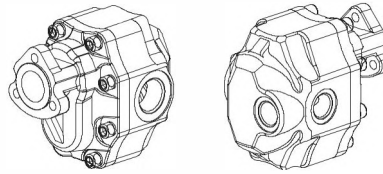
ISO  
CW

CCW



UNI  
CW

CCW



Pompa Tipi Pump Type	Pompa Kodu Pump Code	kapak bağlantı tipi cover mounting tipping	A (mm)	B (mm)	T (mm)	P (mm)	Ağırlık (kg) Weight
87 lt	KH01040870112L/R1	ISO	210	143,5	G 1"	G1 1/4"	20,5
	KH01040870212L/R1	UNI	196	129,5	G 1"	G1 1/4"	18
109 lt	KH01041090112L/R1	ISO	216,5	147	G 1"	G1 1/4"	21,5
	KH01041090212L/R1	UNI	203,5	133,5	G 1"	G1 1/4"	19
133 lt	KH01041330112L/R1	ISO	222,5	150,5	G 1"	G1 1/2"	20
	KH01041330212L/R1	UNI	209,5	137,5	G 1"	G1 1/2"	18,1
151 lt	KH01041510112L/R1	ISO	228,5	153,5	G 1"	G1 1/2"	20,7
	KH01041510212L/R1	UNI	215,5	140,5	G 1"	G1 1/2"	18,9

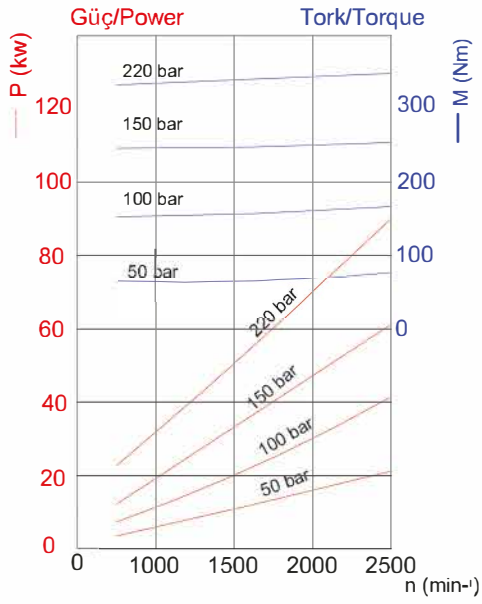


# 40 Grubu Tek Dönümlü Dişli Pompa

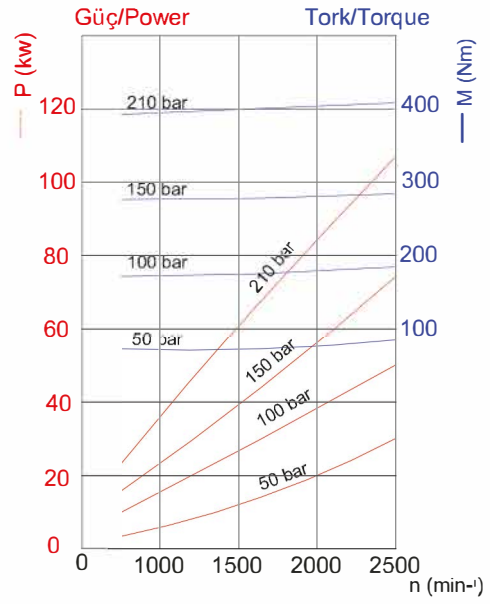
## 40 Group Single-Rotational Gear Pumps



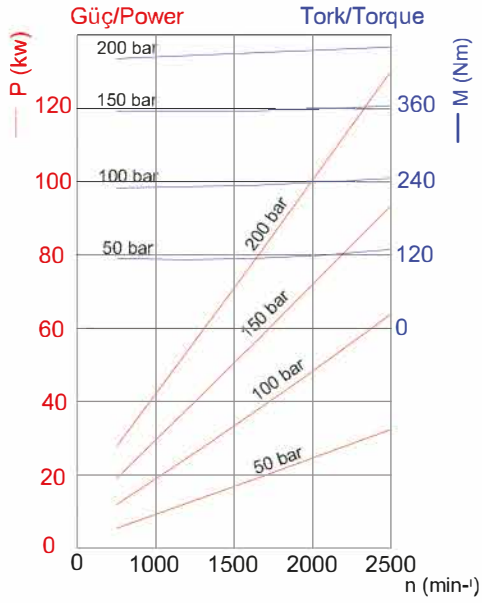
087 LT



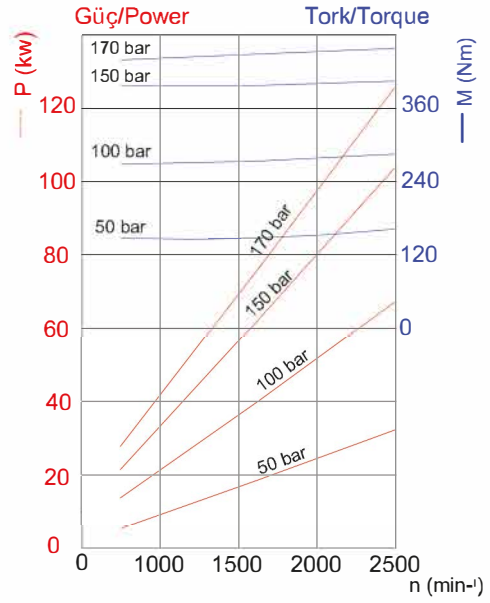
109 LT



133 LT

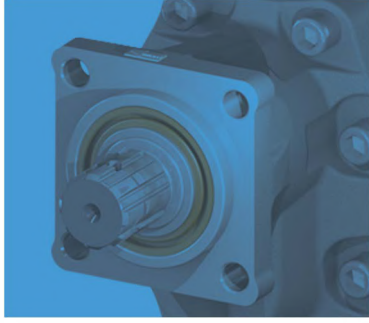


151 LT

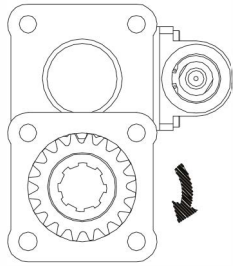




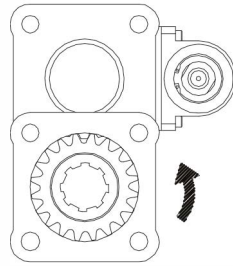
# 40 Grubu Tandem Dişli Pompa 40 Group Tandem Gear Pumps



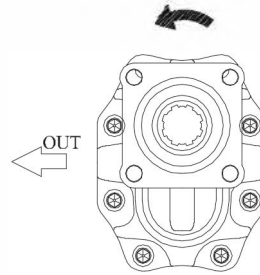
## Teknik Çizim | Technical Drawing



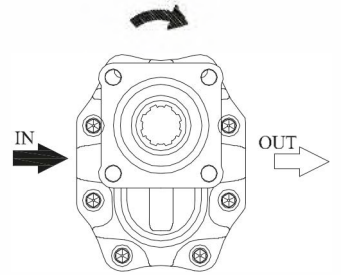
PTO Mili saat yönünde (SAĞ)  
The PTO shaft is CW rotating



PTO Mili saatin tersi yönünde (SOL)  
The PTO shaft is CCW rotating

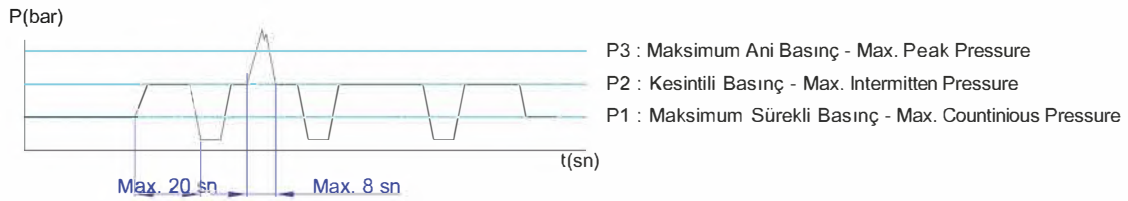


saat yönünün tersi dönüş  
CCW Rotational



saat yönündeki dönüş  
CW Rotational

## Basınç Tanımı | Pressure Definiton



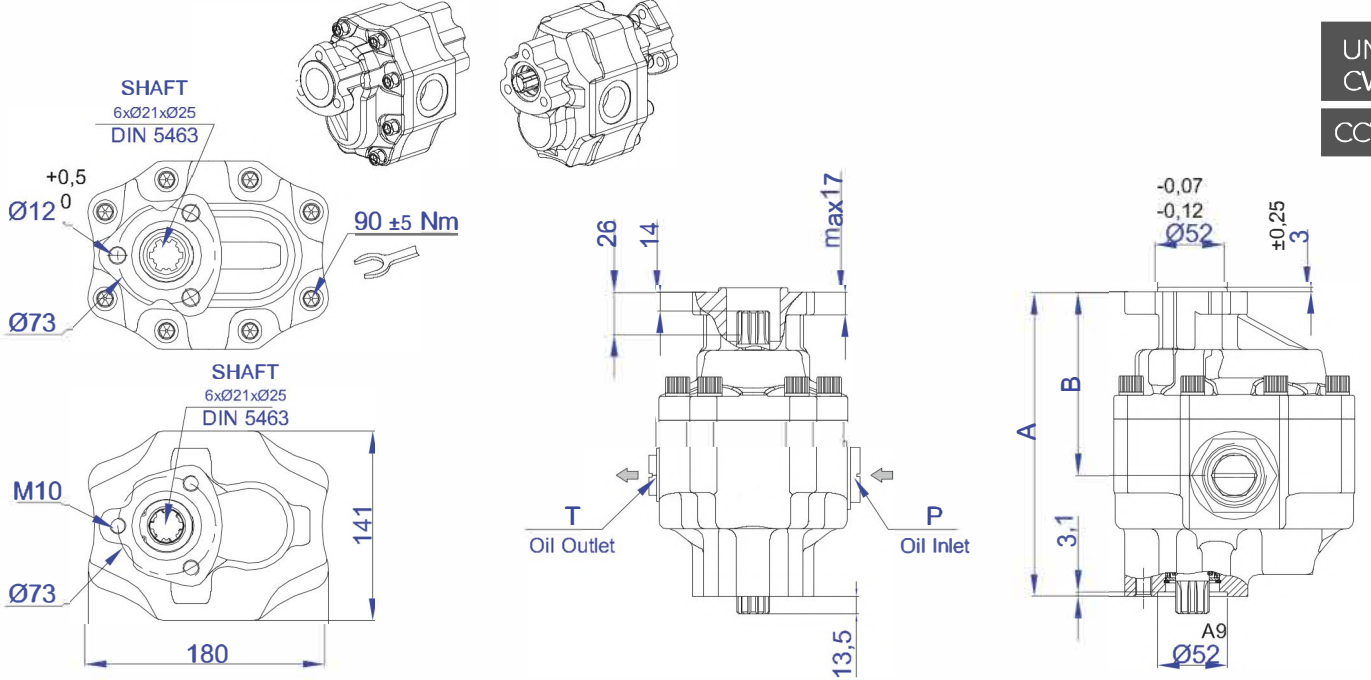
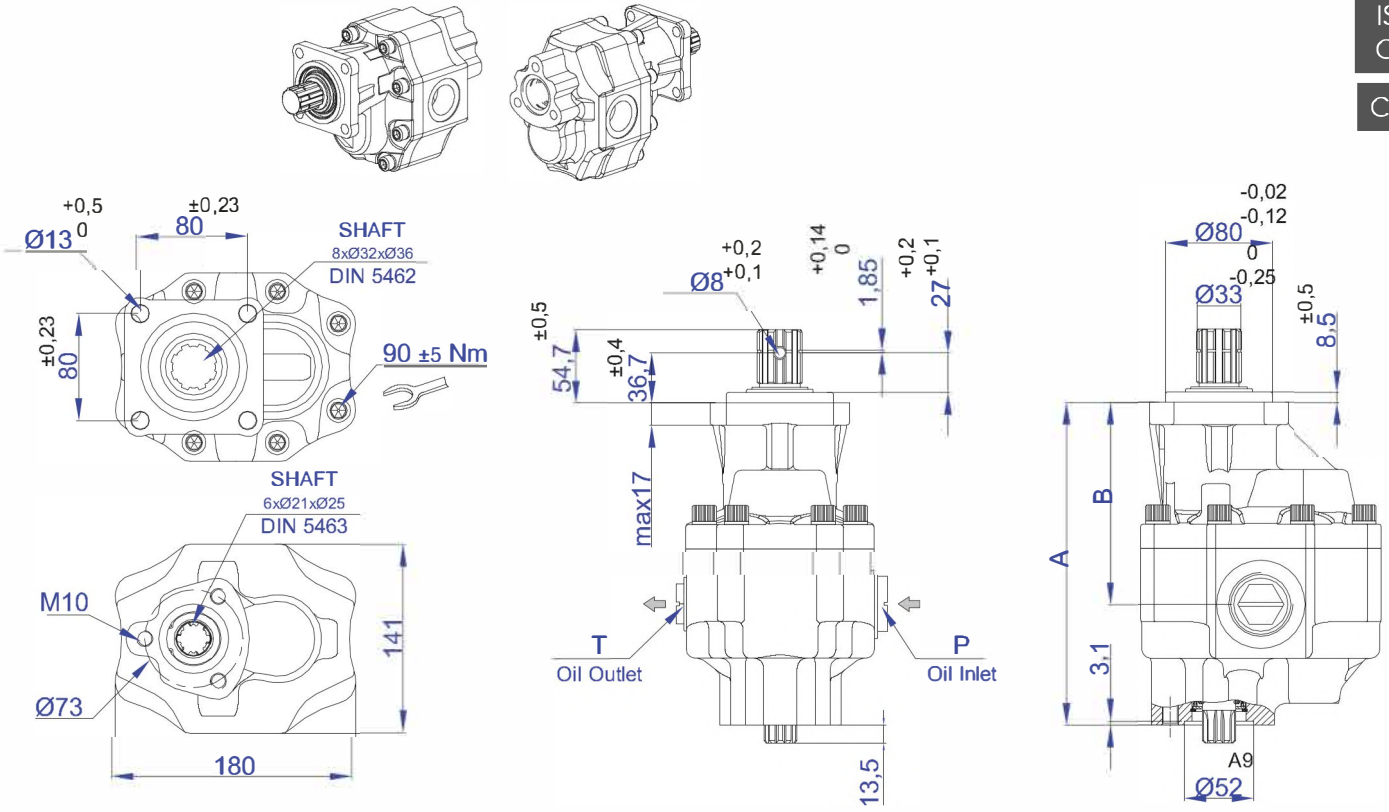
Pompa Tipi Pump Type	Debi Displacement	Max. Sürekli Hız Max. Speed at Continuous Press.	Maksimum Kesik Hız Max. Speed at Intermittent Press.(nmax)	Min Kesik Hız Min. Speed at Intermittent Press.	Max Sürekli Basınç Max. Continuous Pressure (Pnom)	Max. Kesik Basınç Max. Intermittent Pressure (Pmax)	Max. Pik Basınç Max. Peak Pressure (Pmax)
	lt/min	n (min <sup>-1</sup> ) (≤ P1)	n (min <sup>-1</sup> ) (P ≤ 30 bar)	n (min <sup>-1</sup> )	bar	bar	bar
63 lt	63	1700	2200	300	250	270	285
73 lt	73	1700	2200	300	240	260	275
87 lt	87	1700	2000	300	220	240	250
109 lt	109	1700	2000	300	210	230	240
133 lt	133	1700	2000	300	200	220	230

# 40 Grubu Tandem Dişli Pompa 40 Group Tandem Gear Pumps



ISO  
CW

CCW



UNI  
CW

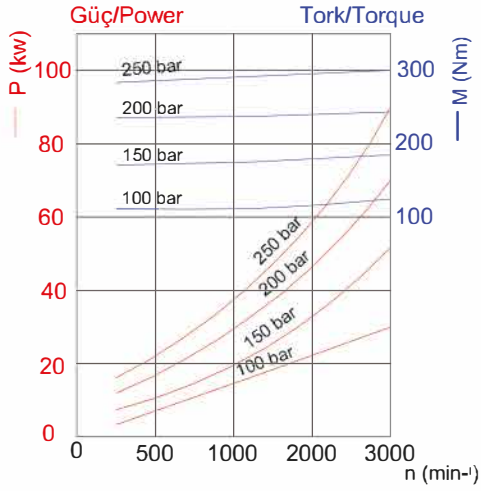
CCW

Pompa Tipi Pump Type	Pompa Kodu Pump Code	kapak bağlantı tipi cover mounting tipping	A (mm)	B (mm)	T (mm)	P (mm)	Ağırlık (kg) Weight
63 lt	KH01040630111L/R1	ISO	214,5	133,5	G 1"	G 1"	18,1
	KH01040630211L/R1	UNI	201,5	120,5	G 1"	G 1"	16,1
73 lt	KH01040730111L/R1	ISO	218,5	137,5	G 1"	G1 1/4"	18,4
	KH01040730211L/R1	UNI	205,5	124,5	G 1"	G1 1/4"	16,4
87 lt	KH01040870111L/R1	ISO	223,5	142,5	G 1"	G1 1/4"	19,1
	KH01040870211L/R1	UNI	210,5	129,5	G 1"	G1 1/4"	17,1
109 lt	KH01041090111L/R1	ISO	231,5	146,5	G 1"	G1 1/4"	20,1
	KH01041090211L/R1	UNI	218,5	133,5	G 1"	G1 1/4"	18,1
133 lt	KH01041330111L/R1	ISO	240,5	150,5	G 1"	G1 1/2"	21,1
	KH01041330211L/R1	UNI	227,5	137,5	G 1"	G1 1/2"	19,3

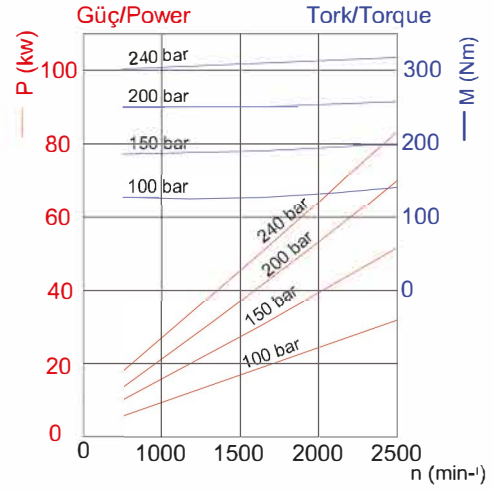


# 40 Grubu Tandem Dişli Pompa 40 Group Tandem Gear Pumps

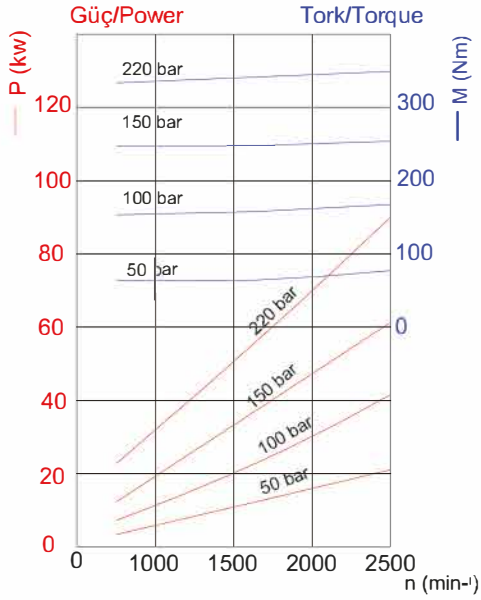
063 LT



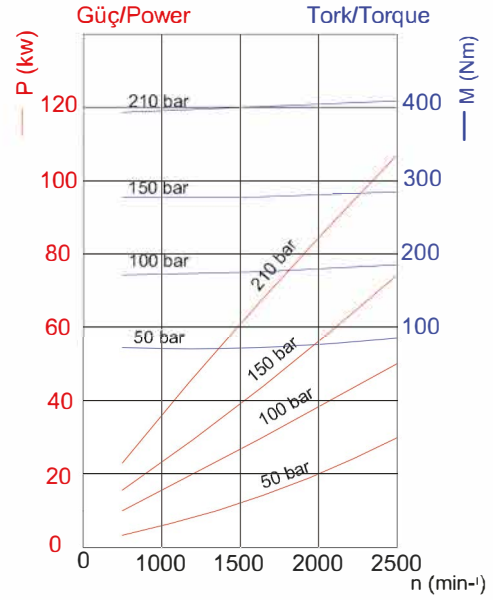
73 LT



087 LT



109 LT



133 LT

